

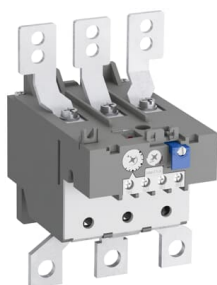



---

 PRODUCT-DETAILS

## TA200DU-110

### TA200DU-110 Thermal Overload Relay 80 ... 110 A




---

#### General Information

Extended Product Type	TA200DU-110
Product ID	1SAZ421201R1002
EAN	4013614286025
Catalog Description	TA200DU-110 Thermal Overload Relay 80 ... 110 A

Long Description	<p>The TA200DU-110 thermal overload relay is an economic electromechanical protection device for the main circuit. It offers reliable and fast protection for motors in the event of overload or phase failure. The device has trip class 10A. Further features are the temperature compensation, trip contact (NC), signal contact (NO), automatic- or manual reset selectable, trip-free mechanism, STOP- and Test function and a trip indication. The overload relays are connected directly to the block contactors. Single mounting kits are available as accessory.</p>
------------------	---

---

#### Ordering

Minimum Order Quantity	1 piece
Customs Tariff Number	85364900

---

#### Popular Downloads

Data Sheet, Technical Information	1SBC100214C0202
Instructions and Manuals	2CDC106028M6802
Instructions and Manuals (Part 2)	1SAC200017M0002
Time-Current Characteristic Curve	1SAZ400502F0002
CAD Dimensional Drawing	2CDC001079B0201
Dimension Diagram	1SAZ400401F0001

## Dimensions

Product Net Width	104 mm
Product Net Height	151 mm
Product Net Depth / Length	126 mm
Product Net Weight	0.76 kg

## Technical

Setting Range	80 ... 110 A
Rated Operational Voltage	Auxiliary Circuit 440 V DC Auxiliary Circuit 500 V AC Main Circuit 690 V AC Main Circuit 440 V DC
Rated Operational Current ( $I_e$ )	110 A
Rated Frequency (f)	Auxiliary Circuit 50 Hz Auxiliary Circuit 60 Hz Auxiliary Circuit DC Main Circuit 60 Hz Main Circuit 50 Hz Main Circuit DC
Rated Impulse Withstand Voltage ( $U_{imp}$ )	Auxiliary Circuit 6 kV Main Circuit 6 kV
Rated Insulation Voltage ( $U_i$ )	690 V
Number of Poles	3P
Number of Auxiliary Contacts NC	1
Number of Auxiliary Contacts NO	1
Number of Protected Poles	3
Conventional Free-air Thermal Current ( $I_{th}$ )	Auxiliary Circuit NC 5 A Auxiliary Circuit NO 5 A
Rated Operational Current AC-15 ( $I_e$ )	(120 V) NC 3 A (120 V) NO 1.5 A (240 V) NC 3 A (240 V) NO 1.2 A (400 V) NC 0.75 A (400 V) NO 0.37 A (440 V) NC 0.75 A (440 V) NO 0.37 A (500 V) NC 0.3 A (500 V) NO 0.25 A
Rated Operational Current DC-13 ( $I_e$ )	(125 V) NC 0.25 A (125 V) NO 0.25 A

	(24 V) NC 1.25 A (24 V) NO 1.25 A (250 V) NC 0.12 A (250 V) NO 0.04 A (60 V) NC 0.25 A (60 V) NO 0.25 A
Degree of Protection	Housing IP20 Main Circuit Terminals IP00
Pollution Degree	3
Connecting Capacity Auxiliary Circuit	Flexible with Ferrule 1/2x 0.75 ... 2.5 mm <sup>2</sup> Flexible 1/2x 0.75 ... 2.5 mm <sup>2</sup> Rigid 1/2x 0.75 ... 4 mm <sup>2</sup>
Connecting Capacity Main Circuit	Hole Diameter > 10 mm <sup>2</sup> Rigid or Flexible with Cable Lug 1x 25 ... 120 mm <sup>2</sup>
Tightening Torque	Auxiliary Circuit 1 ... 1.3 N·m Main Circuit 25 N·m
Wire Stripping Length	Auxiliary Circuit 9 mm
Recommended Screw Driver	Auxiliary Circuit Pozidriv 1 Main Circuit Open Bars
Mounting Position	1 ... 6
Power Loss	at Rated Operating Conditions per Pole 2.5 ... 4.7 W
Suitable For	A145 A185 AF145 AF185 AF190 AF205
Standards	IEC/EN 60947-1 IEC/EN 60947-4-1 IEC/EN 60947-5-1 UL 60947-1 UL 60947-4-1

## Technical UL/CSA

Maximum Operating Voltage UL/CSA	Main Circuit 600 V AC
Contact Rating UL/CSA	(NC:) B600 (NO:) C600
Connecting Capacity Main Circuit UL/CSA	Flexible 1x 4-0000 AWG Stranded 1x 4-0000 AWG
Connecting Capacity Auxiliary Circuit UL/CSA	Flexible 1/2x 18-14 AWG Stranded 1/2x 18-14 AWG
Tightening Torque UL/CSA	Auxiliary Circuit 12 in·lb Main Circuit 220 in·lb

## Environmental

Ambient Air Temperature	Operation -25 ... +55 °C Operation Compensated -25 ... +55 °C Storage -40 ... +70 °C
Ambient Air Temperature Compensation	Yes
Maximum Operating Altitude Permissible	2000 m
Resistance to Shock acc. to IEC 60068-2-27	11 ms Pulse 12g
RoHS Status	Following EU Directive 2011/65/EU and Amendment 2015/863 July 22, 2019
Toxic Substances Control Act - TSCA	2CMT2023-006525

## Material Compliance

Conflict Minerals Reporting Template (CMRT)	9AKK108467A5658
REACH Declaration	2CMT2021-006202
RoHS Information	1SAD938518-0043
WEEE B2C / B2B	Business To Business
WEEE Category	5. Small Equipment (No External Dimension More Than 50 cm)

## ABB EcoSolutions

Environmental Product Declaration - EPD	1SAC200275H0001
Environmental Information	1SAC200056H0009

## Certificates and Declarations

ABS Certificate	1SAA941000-0102
BV Certificate	1SAA941000-0201
CB Certificate	1SAA941004-2003
CQC Certificate	CQC2016010309922936
Declaration of Conformity - CCC	2020980304001321
Declaration of Conformity - CE	1SAD101100-3509
Declaration of Conformity - UKCA	1SAD201100-3509
DNV Certificate	1SAA941000-0304
DNV GL Certificate	1SAA941000-0304
EAC Certificate	1SAA941002-2702
GL Certificate	1SAA941000-0304
LR Certificate	1SAA941000-0504
RMRS Certificate	1SAA941000-0704
UL Certificate	E48139-19910930

## Container Information

Package Level 1 Units	box 1 piece
Package Level 1 Width	165 mm
Package Level 1 Height	133 mm
Package Level 1 Depth / Length	151 mm
Package Level 1 Gross Weight	1.01 kg
Package Level 1 EAN	4013614286025
Package Level 2 Units	4 piece
Package Level 2 Width	280 mm
Package Level 2 Height	210 mm
Package Level 2 Depth / Length	395 mm
Package Level 2 Gross Weight	8.786 kg

Package Level 2 EAN

4013614494246

## Classifications

Object Classification Code	F
ETIM 4	EC000106 - Thermal overload relay
ETIM 5	EC000106 - Thermal overload relay
ETIM 6	EC000106 - Thermal overload relay
ETIM 7	EC000106 - Thermal overload relay
ETIM 8	EC000106 - Thermal overload relay
eClass	V11.0 : 27371501
UNSPSC	39122330
IDEA Granular Category Code (IGCC)	5366 >> Thermal overload relay
E-Number (Finland)	3709358
E-Number (Sweden)	3228702

## Accessories

Identifier	Description	Type	Quantity	Unit Of Measure
1SAZ401110R0001	DB200 Single Mounting Kit	DB200	1	piece
1SAZ401901R1001	LT200/A Terminal Shroud	LT200/A	1	piece
1SFA616162R1014	KPR3-101L Reset push button	KPR3-101L	1	piece

## Categories

Low Voltage Products and Systems → Control Products → Contactors → Thermal Overload Relays

